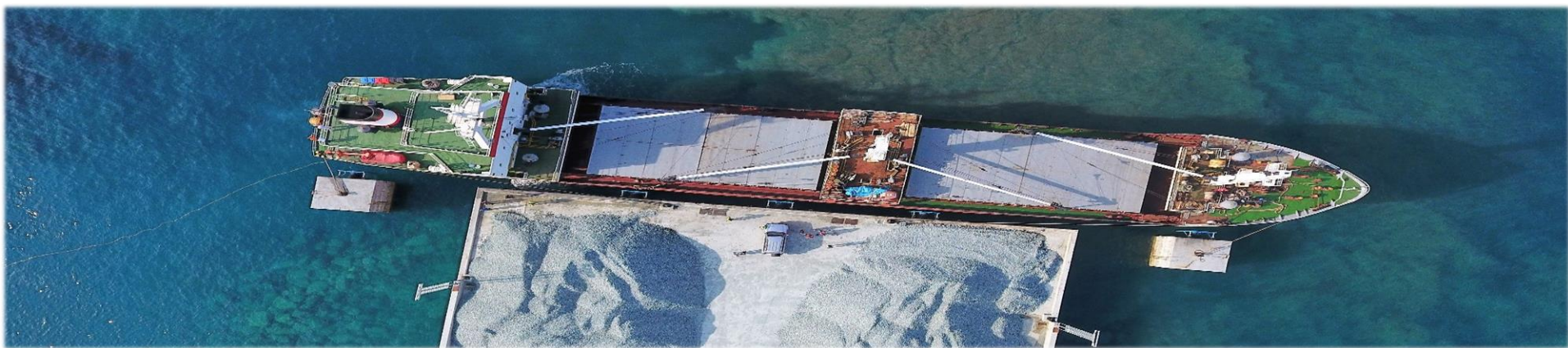




Makis Savvides Group of Companies



2022

P.O. Box 54214, Post Code 3722, Limassol - Cyprus, Tel: +357 25632354, Fax: +357 25633322

Website: www.skyravassas.com - Email: info@skyravassas.com

Table of Contents

- ❑ Message from the president
- ❑ Group's Structure
- ❑ Corporate structure / Strategic development
- ❑ Timeline
- ❑ location
- ❑ Group's Companies :
 - ❖ M.S. Skyra Vassas Ltd
 - Main activities
 - Momentous projects
 - ❖ Skyramix Ltd
 - ❖ Skyramix Packing Ltd
 - ❖ M.S. (Transport) Vassas Ltd
 - ❖ M.A. Savvides Asphaltic Ltd
 - ❖ M.A. Skyra Vassas Terminal Ltd
 - ❖ Makis Savvides & Sons (Contractors) Limassol Ltd
 - Main activities
 - Momentous projects
 - Equipment
- ❑ New activities / Investments



Message from the president

Makis Savvides Group of Companies is the crowning achievement of persistent, hardworking and methodical work for over 50 years in the Quarrying and Infrastructure sector. Starting from the level of individual business in 1966 and having as an ally the consistency, responsibility, hard work and the vision of creation we have so far managed to create the largest Group of its kind in our country.

Guided from above values, throughout our history we have acquired a wealth of know-how, invested and created valuable and specialized managerial staff, acquired excellent equipment and specialized machinery fully essential for the proper and smooth operation of our business.

Today, after 50 years of operations and under the guidance of the 2nd generation of executives of Makis Savvides family Yiannos Savvides and Phidias Savvides and now the third Generation, who have taken over the management of the group, we apply innovative methods and strategies. Taking full advantage of the synergies and benefits of the vertical and horizontal integration of our operations, we have been able to expand and diversified our activities in yet other areas within Cyprus and the wider Mediterranean region.

The dominant position and course in our field is now consolidated and confirmed by the industry. With full knowledge and sensitivity to environmental awareness, respect for our customers, partners and strategic allies, we are enthusiastically pursuing even greater development programs both within and outside of Cyprus.

Concluding, I would like to highlight the important contribution and especially appraise the positive and continuous contribution of the management team and the executives of the group for their long presence, hard work that adds value and help enormously in the formation of our further course of action for our group.

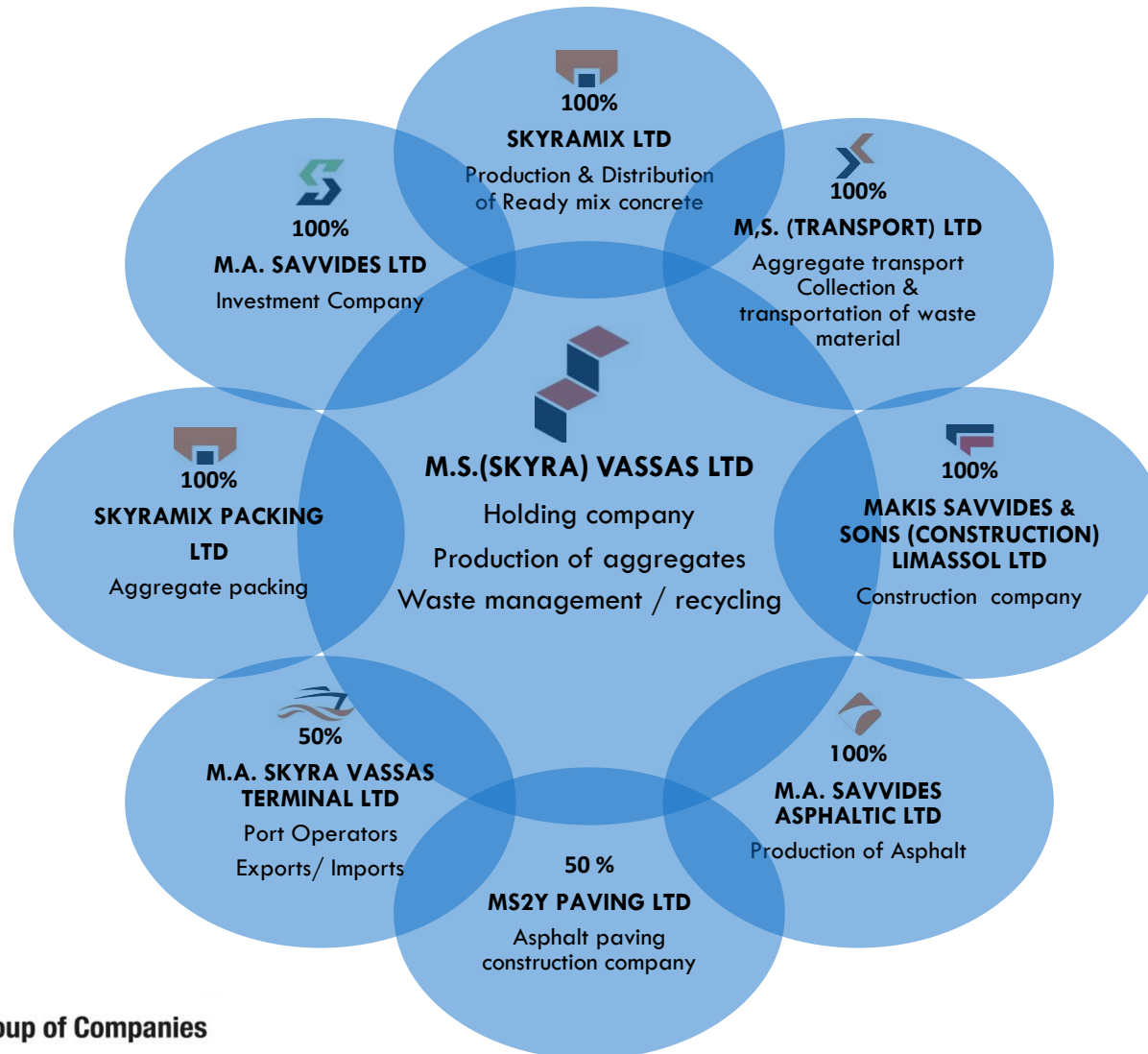
Last but not least, I would like to extend my special thanks to all the communities in the area that are close to our activities for our long lasting and loving cooperation aimed at the common benefit for the locals.

The founder and President of the Council

Makis Savvides



Skyra Vassas Group of Companies Structure



Board of Directors



Board Of Directors of Makis Savvides Group of Companies



MAKIS SAVVIDES
(Chairman of the board)

Founder and chairman of the group. Makis Savvides commenced operations in 1967 as a contractor on Infrastructure projects, then expanded operations to cover construction and quarry works.

Vast experience in heavy machinery equipment.



IOANNIS SAVVIDES
(Managing Director)

Holder of a degree in Road Transport Engineering, University of East London.

Over 30 years of experience in the quarry management and construction industry.



PHEDIAS SAVVIDES
(Executive Director)

Holder of a Bachelor degree of Business Administration (B.B.A.), university of Coventry.

Over 20 years of experience in the quarry management and financial control.

Corporate Structure / Strategic Development

- Commencement of operations by founder Makis Savvides 1967.
- Specialised executive personnel targeting development / strategic alliances with subcontractors, suppliers, associates and financiers.
- Strategic implementation of vertical integration provides economies of scale development, excellent handling and utilisation of materials and resources of the group.
- Major supplier of excellent quality construction materials in Cyprus and Abroad.
- Recent strategic developments include:
 - i. Construction and Operation of our private port for loading/unloading of aggregates and other heavy materials(dirty cargo)
 - ii. Packing and distribution of aggregates
 - iii. Import and distribution of bitumen
 - iv. Production and distribution asphalt concrete
 - v. Execution of structural works
 - vi. Waste management / recycling
- Quality upgrading of procedures, continuous training , enhancement and specialisation of working force



Timeline of Skyra Vassas Group

1967	• COMMENCEMENT OF OPERATIONS BY FOUNDER MAKIS SAVVIDES – ROAD WORKS
1987	• SETUP MAKIS SAVVIDES CONSTRUCTION LIMASSOL LTD – TECHNICAL WORKS
1991	• SETUP M.S. (SKYRA) VASSAS LTD – QUARRY WORKS
2001	• SETUP READY MIX CONCRETE – SKYRAMIX LTD
2007	• AGGREGATE PACKING OPERATION – SKYRAMIX LTD
2007	• TRANSPORTATION COMPANY – M.S. (TRANSPORT) VASSAS LTD
2011	• NEW AGGREGATE CRUSHING PLANT- PRODUCTION CAPACITY 1300 T. HR.
2012	• SETUP OF ASPHALT PLANT – M.A. SAVVIDES ASPHALTIC LTD
2012	• RECYCLING UNIT – CONSTRUCTION & DEMOLITION WASTE – LANDFILL LICENCE
2016	• ASPHALT PAVING CONSTRUCTION COMPANY – MS2Y PAVING LTD
2016	• DESIGN, CONSTRUCTION & MANAGEMENT OF PRIVATELY OWN PORT – M.A. SKYRA VASSAS TERMINAL LTD
2017	• MARINE WORKS
2018	• THERMOLYSIS PLANT (Tire Recycling)
2019	• OPERATIONS OF PRIVATE JETTY - M.A. SKYRA VASSAS TERMINAL LTD
2020	• RECYCLING SORTING PLANT IN PAFOS





Location



Location : Monagroulli, 30 km Northeast of limassol and only 19km from privately own Port at Vasiliko area.





Main Activities

Quarry

- The largest privately own quarry in the island 750.000 sq.metr. 100 million tones of excellent quality aggregate reserves

Crushing Plant

- First of its kind in Europe, successful installation and implementation of technologically advanced crushing plant unit - production capacity 1.300 tones per hour
- Electronically controlled unit at different stages of production – crushing, sieving processing and differentiation – washing up segregation.

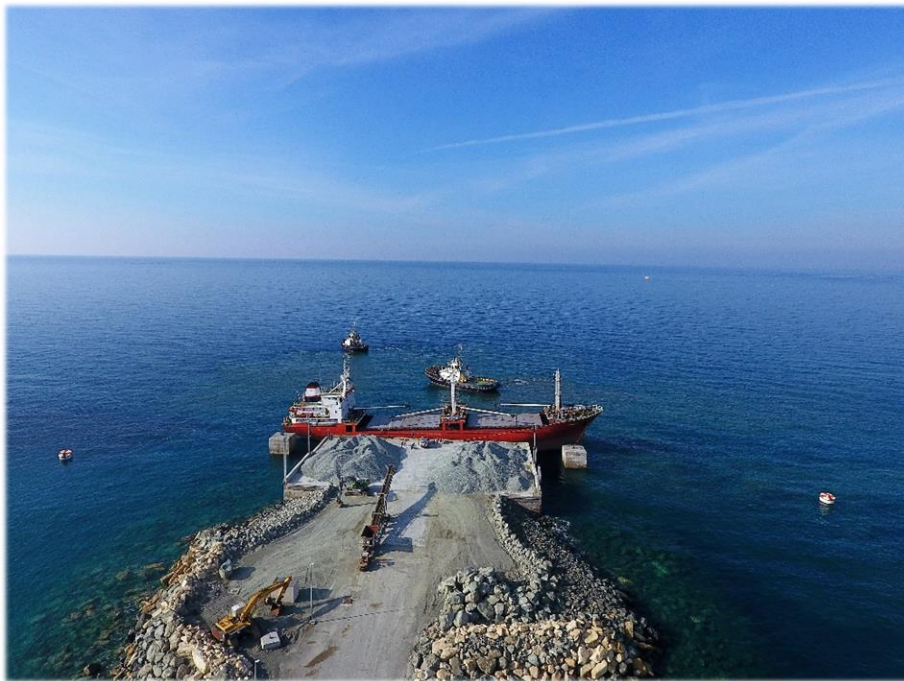




Main Activities

Exports

- M.S Skyra Vassas Ltd is producing, transporting and exporting aggregates.
- A major strategy of our company is the geographic diversification through exports to Eastern Mediterranean countries such as Greece, Israel, Lebanon and others.





Main Activities

Waste Management Plants

Our group's Waste Management Plants in Cyprus :

- a) Limassol - Monagroulli
- b) Pafos - Agia Barbara

Recycling Sorting Plant in Limassol (Monagroulli)

- ❑ First of its kind unit for processing construction & demolition waste materials in Cyprus.
- ❑ Waste management unit.
- ❑ Licensed to storage hazardous material waste ex. Rockwool and asbestos.
- ❑ Licensed to accept and handle solid waste such as, glass packaging, car windshields, wood and tyres.





Main Activities

Waste Management Plants

RECYCLING SORTING PLANT IN PAFOS - (Agia Varvara)

- From 1st of February 2020, the second licensed waste management plant for construction and demolition (AEKK) treatment plant commenced its operation.
- The plant in Paphos can process 40 tons of waste per hour.





Main Activities

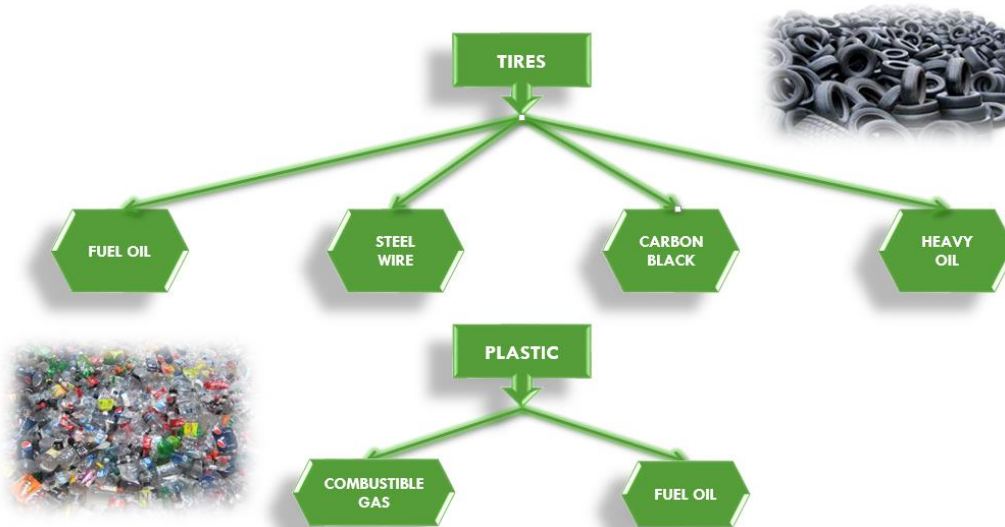
Waste Management Plants

THERMOLYSIS PLANT (Tire Recycling)

- In 2012 we started research, development and production of a pilot plant.
- Developed and refined the gasification system that is vastly different from other processes.
- 2018 finally we have achieved the production of on specification fuel products
- We are currently waiting to be licensed in order to officially commence operation.



Thermolysis End Products





Momentous Projects

Exports – Leviathan Project

- M.S Skyra Vassas LTD produced, transported and exported aggregates for the Leviathan project in the Mediterranean sea that was used as the underwater gas pipeline bedding.

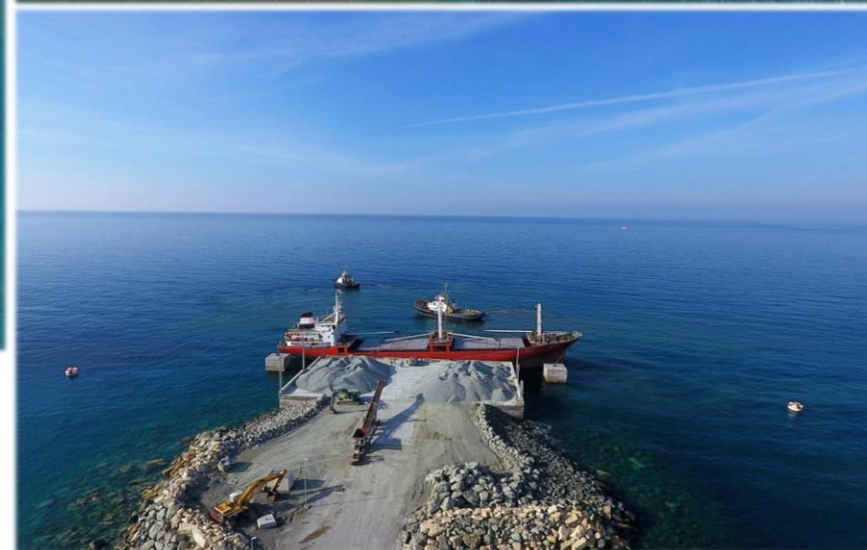
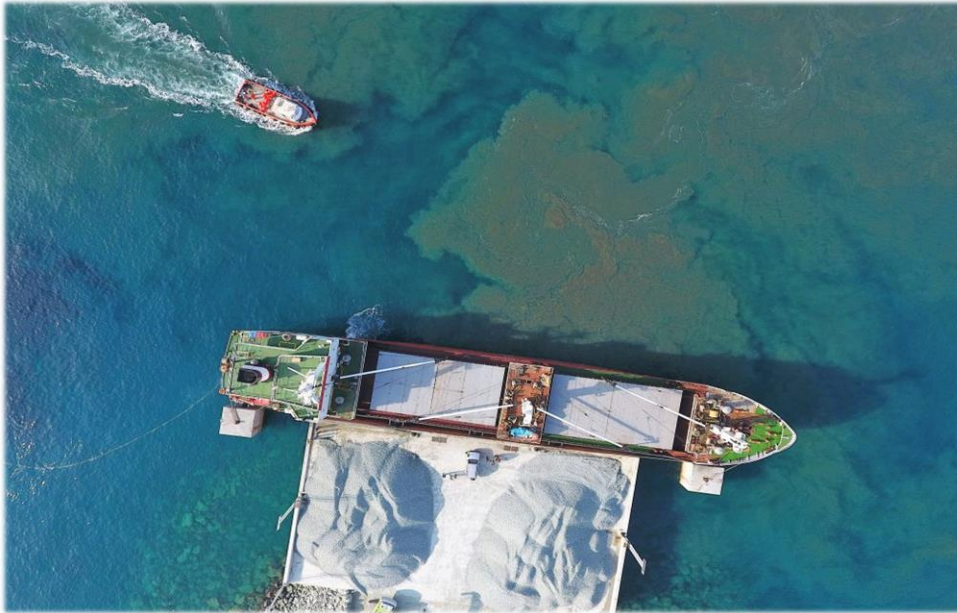




Momentous Projects

Exports – Greece Railroad

- M.S. (SKYRA) VASAS LTD produces, transports and exports inert materials for rail ballast in Greece via its own port





Ready Mix Concrete – Batching plant

- Production and distribution of ready mix concrete.
- Permanent and mobile units with production capacity from 80 – 100 cubic meters per unit per hour.
- High quality and reliable mechanical equipment, machinery and concrete pumps.



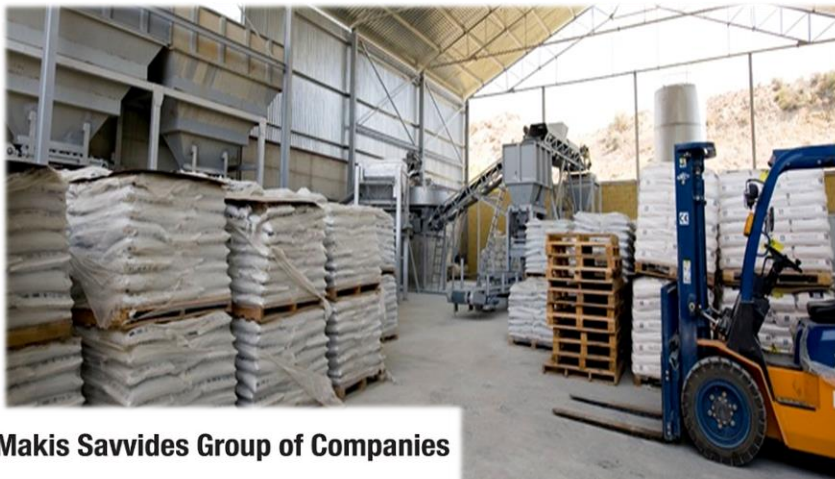


**Skyramix
Packing Ltd**

Main Activities

Aggregate Packing Plant

- Processing, packing and distribution of aggregates of 25kg and 1 tone bags.
- Capability of size and weights of aggregates.



Makis Savvides Group of Companies



Transportation Company

- ❑ Licensed to collect and transport waste materials .
- ❑ Privately own heavy lorry and truck trailers fleet.
- ❑ Transportation of group production island wide.
- ❑ Capability of transportation and relocation of heavy equipment and machinery.



M.A. Savvides Asphaltic Ltd

Main Activities

Asphalt Plant

- ❑ Privately own asphalt plant
- ❑ Production Capacity 200 tones per hour.
- ❑ Importation, storage and distribution of bitumen.



Main Activities

Private Port

- ❑ Operators of our own private Port
- ❑ Facilitate import and export operations.



Construction Company

- ❑ Licensed to execute all types of technical works class A
- ❑ Demolition and formation, de commissioning of asbestos quarry
- ❑ Reformation projects
- ❑ Road works (construction – reformation – improvement of road network across the island)
- ❑ Construction and infrastructure techniques for Port Projects
- ❑ Constructions of athletic grounds (Agios Tychonas and Pentakomo)



Projects

- ❑ Design & Construction of a crushing plant line with a production capacity of 1,300t/h (steel structures, installation of electromechanical equipment, etc.)
- ❑ Reconstruction works (Community of Arsou, Fasoulas and Polis Chrysochous)
- ❑ Road Construction Projects (Modification and improvement of Miltonos and Paphos streets, asphalt works for the project 'Construction of a new passenger room in Limassol Port', road construction in the area of Markidio Theater in Paphos etc.)
- ❑ Restoration and enhancement of the traditional core of Kato Paphos (Psarochori)
- ❑ Improvement of Fellahoglou Streets and two nearby parking lots.
- ❑ Improvement of the road connecting the center with the tourist area of Geroskipou.





Momentous Projects

Projects - Marine Works



- Deepening and widening the entrance of the port to the naval base Evangelos Florakis.
- Design, construction and build of our private port.
- Rehabilitation of the area of phosphogypsum deposits in the region of Vassilikos and construction of shields for protection against marine erosion of the coastal front.

❖ **Construction and infrastructure techniques for Marine Projects:**

Metal and injected Piles, interpenetrated Piles and metal boards.

Embankment, transport and placement of boulders.

Use of a floating crane and barge for the transport and placement of boulders.



Equipment

Pilling drilling machine



Vibro hammer





Equipment

Heavy Machinery



Specialized Equipment



New activities / Investments

- Construction of Terminal platform for importation/ exportation of bitumen.
- 3rd Recycling plant in the island.
- Construction & Development of tyre recycling plant.

